

## **Leisure Time One**

### **The plan of the seance**

**1- Read**

**2- Puzzle**

**3- Adding letters**

**4- Simple logic**

**5- Riddle**

**6- Problem solving**

- **Read:**

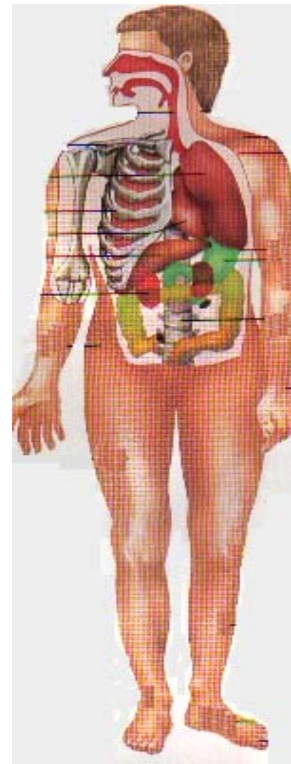
## **Exploring the body**

The human body is a highly organized structure.

It is composed of cells, tissues, organs, and systems. A cell is the smallest unit within the body that can maintain life and reproduce itself.

Cells group together to form the various tissues of the body. An organ is composed of different tissues arranged to perform a specific function.

Systems are the most complex of the units making up the body. Although each body part has its own special function, all of the parts work together to keep the body alive and healthy. The body needs proper care in order to work correctly. It is important for you to know about your body and its needs so that you can give your body the proper care.



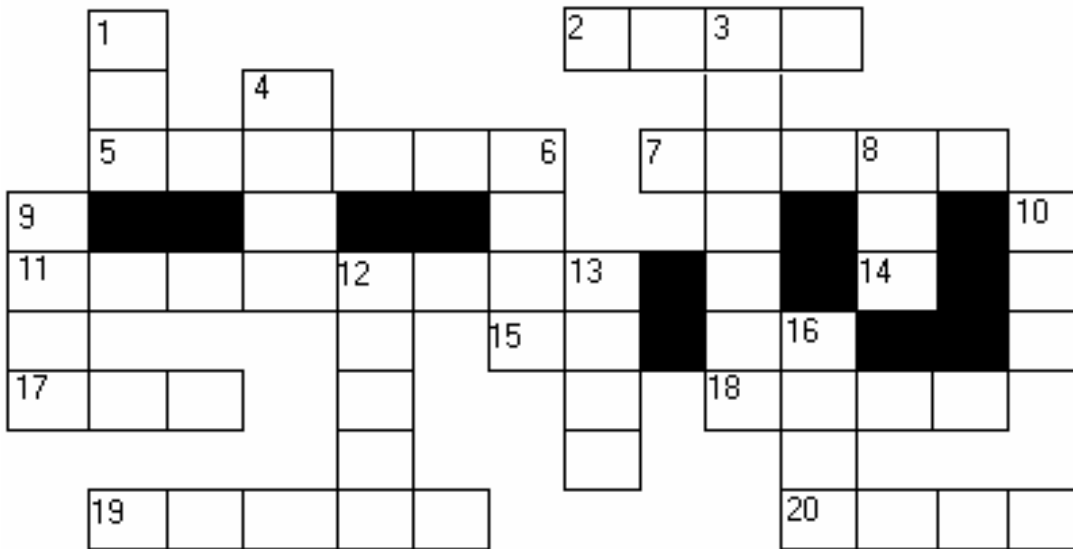
**Underline the correct answers.**

سطر على الجواب المناسب .

1. The body's most important business is:  
a - eating b- breathing c- reproducing d- survival
  
2. The most abundant compound contained in the body is:  
a- sugar b- water c- oxygen d- urea
  
3. The science which studies the structure of the body is called:  
a- physiology b- psychology c- anatomy d- geology
  
4. A healthy body needs:  
a- food b- water c- oxygen d- rest and sleep
  
5. The solid elements which give shape to the body are:  
a- tissues b- foods c- bones d- wooden

• **Puzzle:**

**Find the word that corresponds to each definition and put in the grid.**



clock - pay - pie - prize - street - snake - huge - rose - peach - drop - hunt - grin -  
zip - scratch - toes - raincoat tent - trap - bed - bus.

- **Adding letters:**

**1- Add a letter from each word below, make two**

:

**Across**

2. This is a flower.
5. Cars travel on this.
7. It is something you win.
11. You wear this when it rains.
14. You bake this.
15. This is a fruit.
17. You do it when you buy things.
18. This word means very big.
19. This is a reptile.
20. You have ten of this

**Down**

1. This is something to ride on.
3. Claws can do this.
4. This is a big smile.
6. You use this to catch mice.
8. You do this to close a jacket.
9. This means to fall.
10. This is something you sleep in.
12. You look at it to tell the time.
13. It is a shelter made of cloth.
16. It means to look for something.

**2-new words by adding a letter**

a) at the beginning

b) at the end

eg: he → she / her

- 1) go ...../.....
- 2) oil ...../.....
- 3) hear ...../.....
- 4) hat ...../.....
- 5) not ...../.....

- Simple logic:

- a) Why is it easier to wash a mirror than a window?
- b) What kind of fish can't swim?
- c) What has hands and a face but can't touch or smile?
- d) What is the difference between here and there?

- Riddle:

I have cities but no houses, and forests but no trees.  
I have rivers without water, and no ships but many seas.  
What am I ?

- Problem solving:

435 people came to the museum in the morning,  
258 people left  
371 more people came.  
How many people are at the museum now?